

## Spoked handwheels

with large hub

### SPECIFICATION

#### Types

- Type **A**: without handle
- Type **D**: with revolving handle

#### Bore codes

- Version **B**: without keyway
- Version **K**: with keyway

#### Cast iron GG

- Hub machined
- Rim turned and polished

Rim concentric and square to bore < 0.4

Revolving handles DIN 98 (see page 579)

Steel, zinc plated

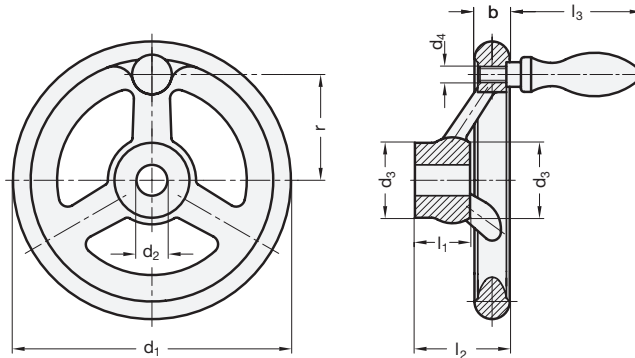


### INFORMATION

Handwheels GN 950.1 differ from normal handwheels DIN 950 (see page 140) only by the larger hub.

### TECHNICAL INFORMATION

- Keyway P9 DIN 6885 (see page A16)
- Cross holes GN 110 (see page A17)
- ISO- Fundamental Tolerances (see page A21)



#### GN 950.1-A

Description	d1	d2 H7	d3	b	l1	l2 ≈	No. of spokes	⚖
GN 950.1-GG-125-B14-A	125	14	34	16	26	45	3	750
GN 950.1-GG-125-K14-A	125	14	34	16	26	45	3	740
GN 950.1-GG-160-B16-A	160	16	45	18	32	52	3	1300
GN 950.1-GG-160-K16-A	160	16	45	18	32	52	3	1280
GN 950.1-GG-200-B20-A	200	20	50	22	38	59	3	2306
GN 950.1-GG-200-K20-A	200	20	50	22	38	59	3	1290
GN 950.1-GG-250-B24-A	250	24	56	26	44	66	3	4108
GN 950.1-GG-250-K24-A	250	24	56	26	44	66	3	4000

#### GN 950.1-D

Description	d1	d2 H7	d3	b	l1	l2 ≈	l3 ≈	r	∅ Handle	No. of spokes	⚖
GN 950.1-GG-125-B14-D	125	14	34	16	26	45	65	47	20	3	886
GN 950.1-GG-125-K14-D	125	14	34	16	26	45	65	47	20	3	882
GN 950.1-GG-160-B16-D	160	16	45	18	32	52	80	62	25	3	1557
GN 950.1-GG-160-K16-D	160	16	45	18	32	52	80	62	25	3	1551
GN 950.1-GG-200-B20-D	200	20	50	22	38	59	80	80	25	3	2515
GN 950.1-GG-200-K20-D	200	20	50	22	38	59	80	80	25	3	2508
GN 950.1-GG-250-B24-D	250	24	56	26	44	66	102	101	32	3	4410
GN 950.1-GG-250-K24-D	250	24	56	26	44	66	102	101	32	3	4400

